



Dual Band 2.4G 5.8G Antenna

Part Number: W-2FA1

51*13*0.2 mm
 RoHS/RoHS II Compliant

Features

- Operates in 2400-2490 MHz and 5749-5900 MHz
- Dual band antenna
- Vertical polarization
- High gain of 1.9 dBi
- VSWR 2.0
- Omni-directional pattern

Applications

- Wifi radios
- Gateways
- Set-Top Boxes
- Security
- IoT
- M2M
- Transportation
- Smart agriculture

Electrical Characteristics

Parameters	Min.	Typ.	Max.	Units	Notes
Frequency Range	2400		2490	MHz	
	5749		5900	MHz	
VSWR	1.5		2.0		
Polarization Model	Vertical				
Impedance		50		Ω	
Gain		1.9		dBi	
Azimuth	Omni-directional				
Power Handling Capacity		50		W	
Lighting Protection	Direct Current earth				

Mechanical Characteristics

Parameters	Description	Note
Connector	IPEX	
Cable Type	RG-1.13	Inside the enclosure, 50 Ω
Radiator	Cuprum	

Environmental Characteristics

Parameters	Description	Note
RoHS Compliant	Yes	
MSL	N/A	
Operating temperature	-45 °C to +85 °C	
Storage temperature	-45 °C to +85 °C	

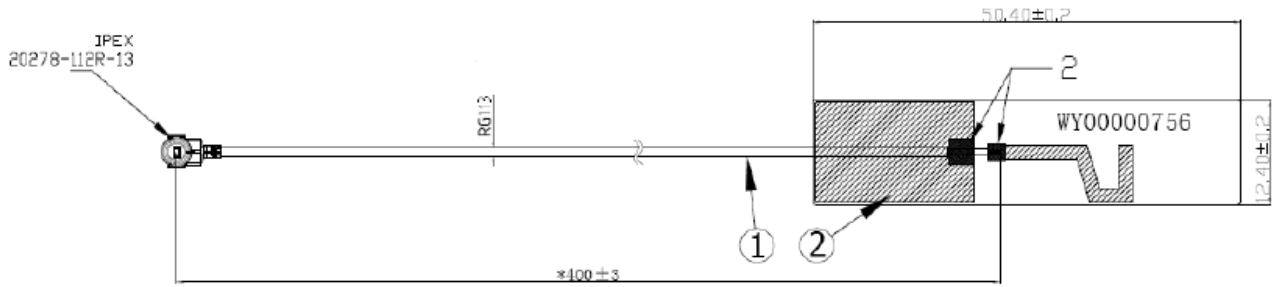


Dual Band 2.4G 5.8G Antenna

Part Number: W-2FA1

51*13*0.2 mm
RoHS/RoHS II Compliant

Dimensions





Dual Band 2.4G 5.8G Antenna

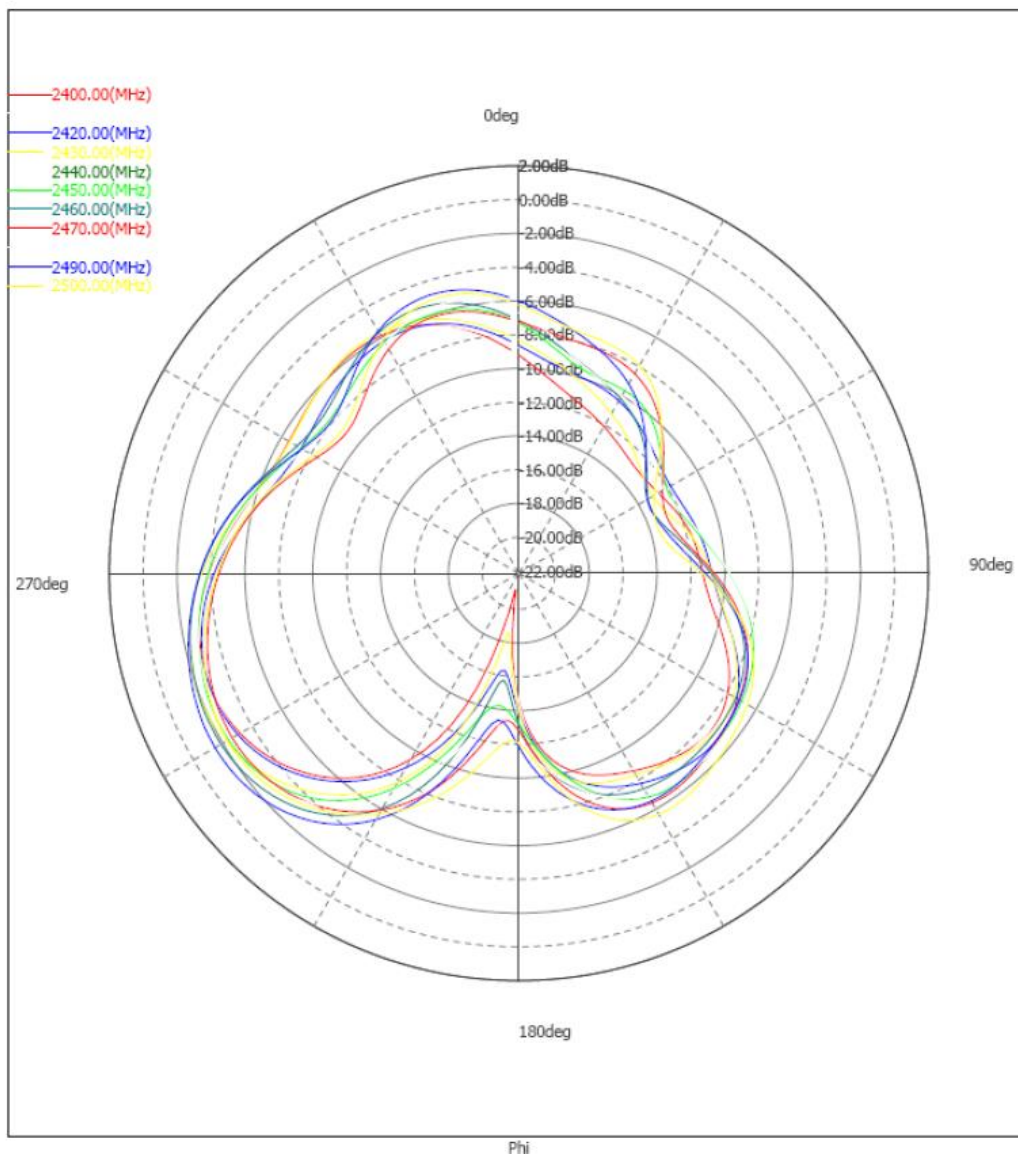
Part Number: W-2FA1

51*13*0.2 mm
RoHS/RoHS II Compliant

Radiation Patterns Antenna 2.4G

2D – Pattern(2.4G)

H(2.4G)



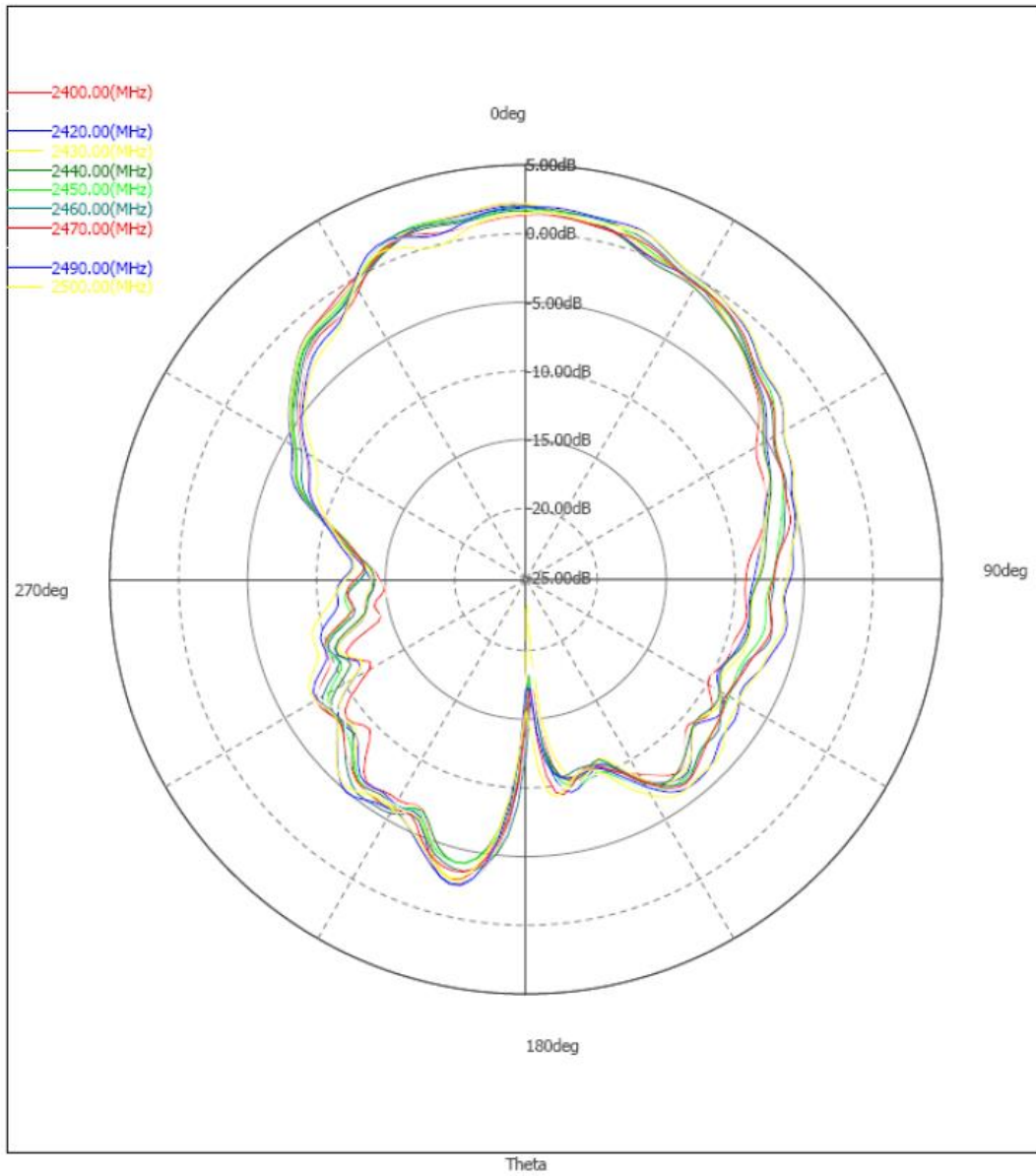


Dual Band 2.4G 5.8G Antenna

Part Number: W-2FA1

51*13*0.2 mm
RoHS/RoHS II Compliant

E1(2.4G)



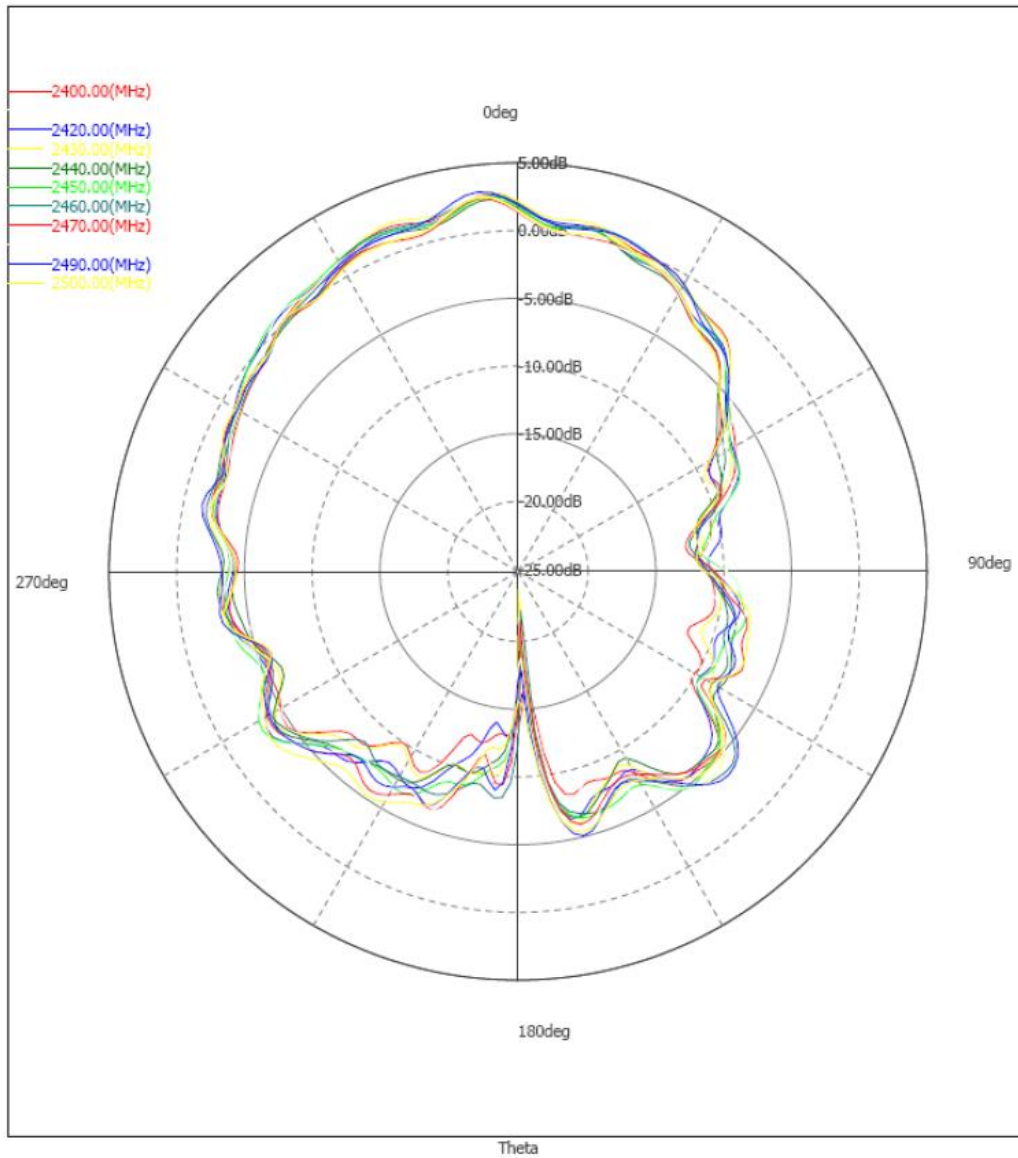


Dual Band 2.4G 5.8G Antenna

Part Number: W-2FA1

51*13*0.2 mm
RoHS/RoHS II Compliant

E2(2.4G)





Dual Band 2.4G 5.8G Antenna

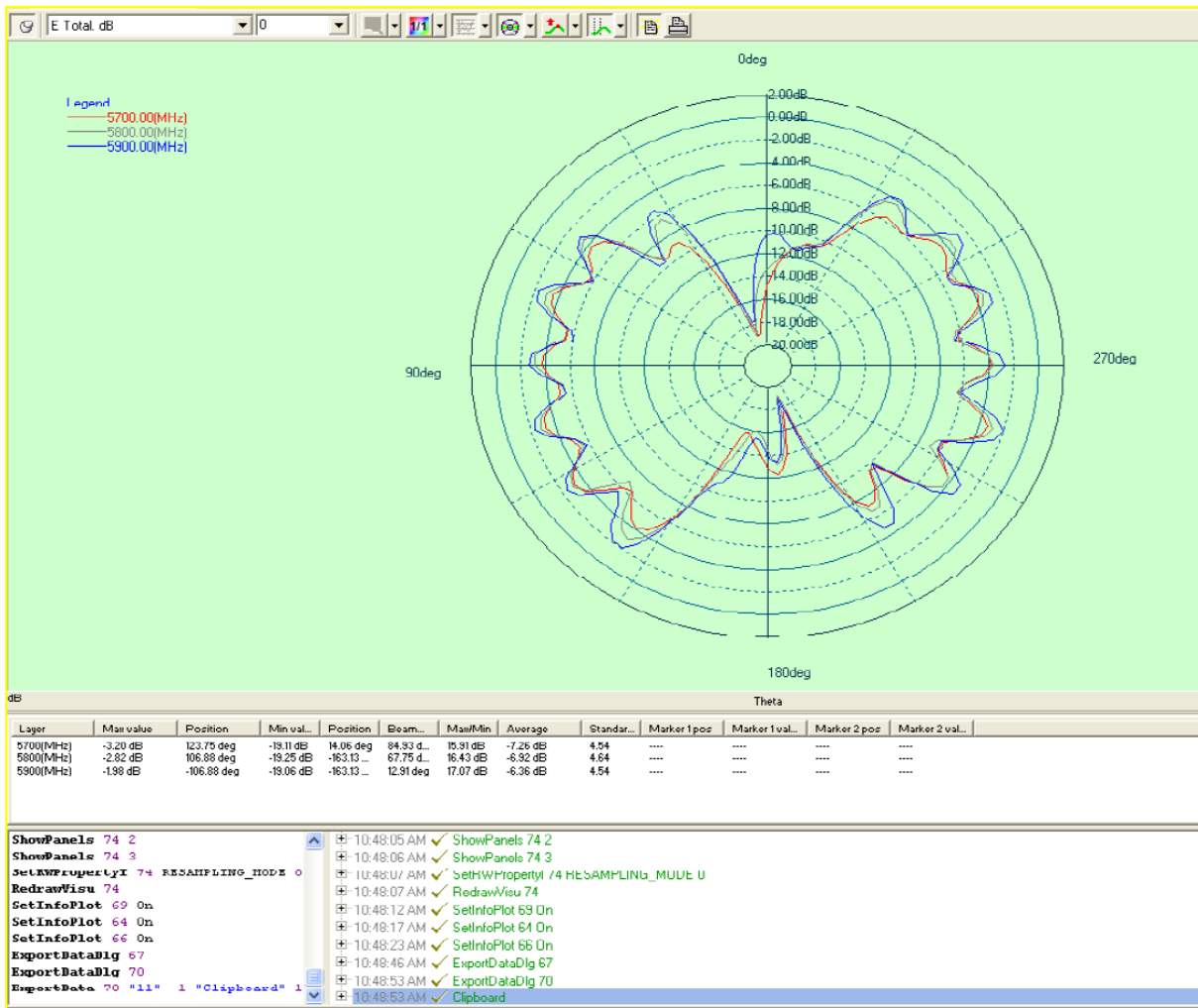
Part Number: W-2FA1

51*13*0.2 mm
RoHS/RoHS II Compliant

Radiation Patterns Antenna 5.8G

2D – Pattern(5.8G)

H(5.8G)



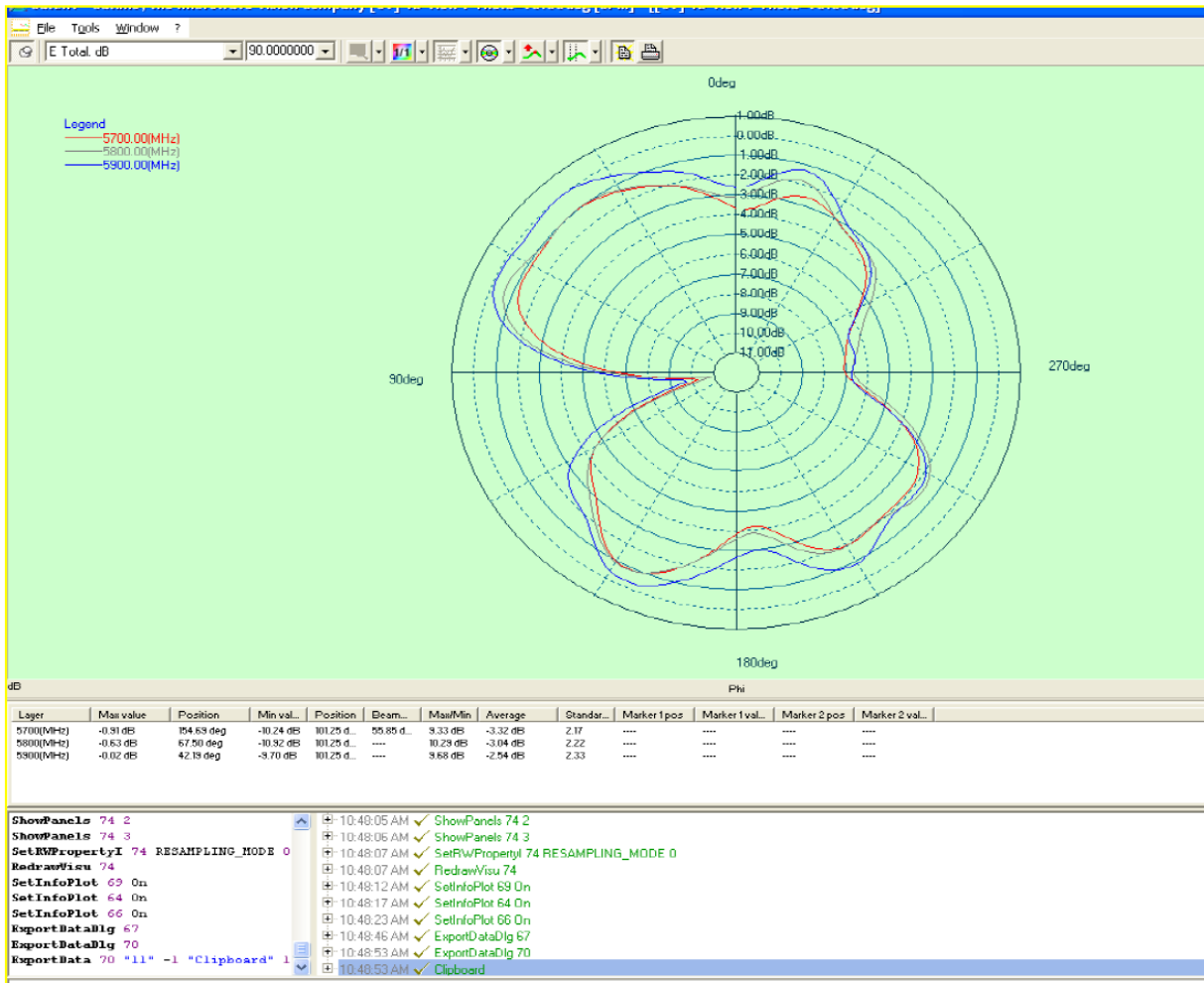


Dual Band 2.4G 5.8G Antenna

Part Number: W-2FA1

51*13*0.2 mm
RoHS/RoHS II Compliant

E1(5.8G)



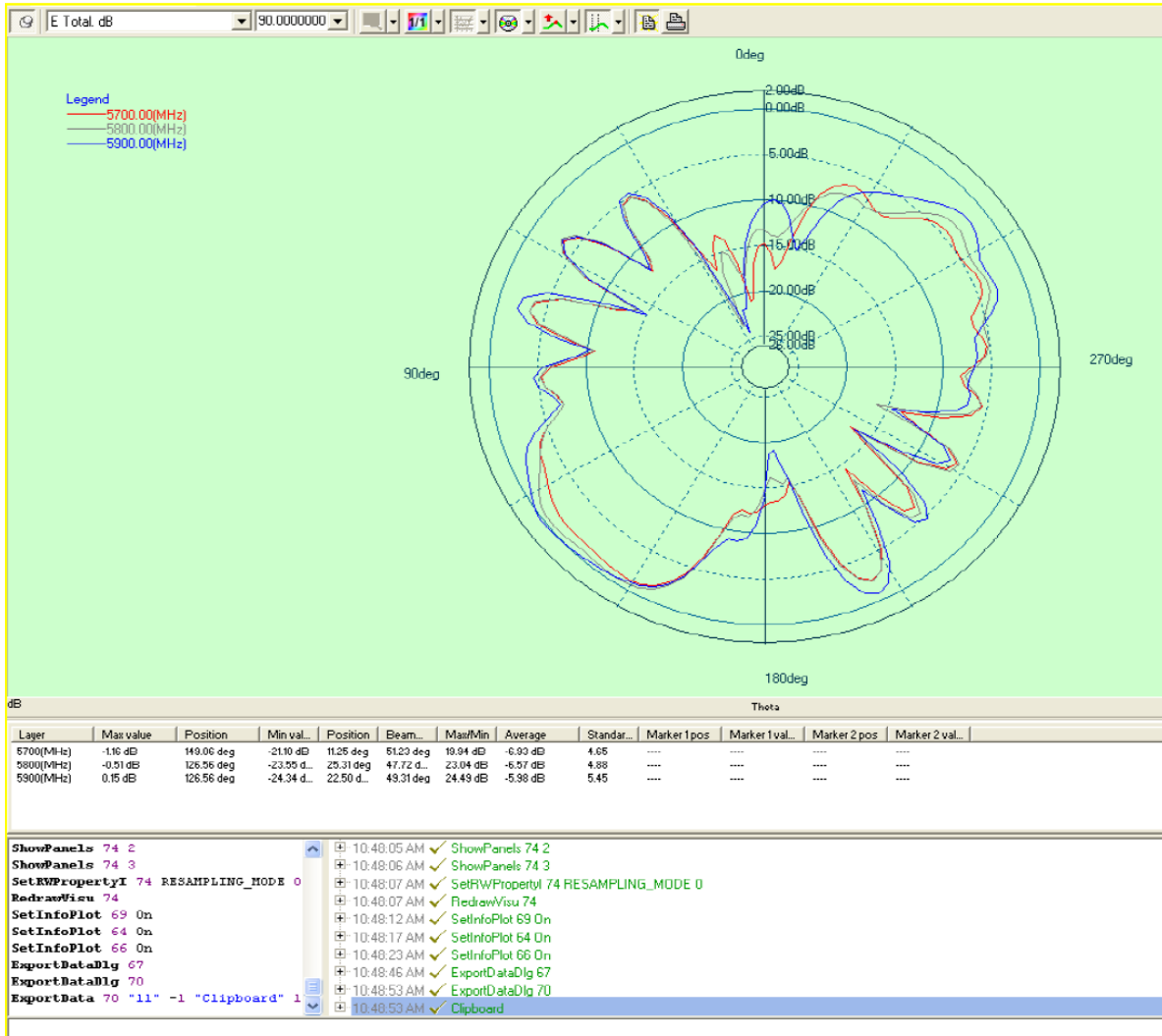


Dual Band 2.4G 5.8G Antenna

Part Number: W-2FA1

51*13*0.2 mm
RoHS/RoHS II Compliant

E2(5.8G)





Dual Band 2.4G 5.8G Antenna

Part Number: W-2FA1

51*13*0.2 mm
RoHS/RoHS II Compliant

Antenna parameters

Freq/MHz	2400	2500	5749	5800
VSWR	1.7	1.5	2.0	1.77

Frequency (MHz)	Efficiency	Gain (dBi)
2400	0.46	1.90
2410	0.45	1.68
2420	0.47	1.69
2430	0.47	1.82
2440	0.45	1.39
2450	0.49	1.58
2460	0.49	1.68
2470	0.47	1.50
2480	0.50	1.69
2490	0.51	1.01
5700	0.43	1.46
5800	0.46	1.62
5900	0.47	1.34



MiotWireless

Miot Wireless Solutions Ltd
<http://www.miotsolutions.com>
Info@miotsolutions.com

Dual Band 2.4G 5.8G Antenna

Part Number: W-2FA1

51*13*0.2 mm
RoHS/RoHS II Compliant

Packaging

TBD

Caution:

- (1) Do not apply excess mechanical stress to the component body or terminations. Do not attempt to re-form or bend the components as this will cause damage to the component.
- (2) Do not expose the component to open flame.
- (3) This specification applies to the functionality of the component as a single unit. Please ensure the component is thoroughly evaluated in the application circuit.