



## GNSS Ceramic SMD Mount Antenna



**Part Number:** G-2RE4

**18\*18 \*4 mm**  
**RoHS/RoHS II Compliant**

### Features

- High Gain
- Compact Size and Low Profile
- **SMD Type**
- Customization Available
- IP67 rated
- RoHS Compliance

### Applications

- Automotive navigation
- PND & PDA
- Surveying equipment
- Cell phone
- Laptop
- Healthcare and medical monitoring devices

### Electrical Specifications

Parameters	Min.	Typ.	Max.	Units	Notes
GPS/QZSS/Galileo Frequency	1616-1627		MHz		
IRIDIUM Frequency	1575.42		MHz		
-10dB Bandwidth	6			MHz	
Gain (Zenith@90°)			3.7	dB	(Peak gain on standardized Ground Plane.)
VSWR at CF			1.3		
Impedance	50		$\Omega$		
Polarization Model	RHCP				(Right Hand Circular Polarization)
Frequency Temperature Coefficient			20	ppm/°C	

(\*) Application environment, including size of ground plane will affect stated performance. Fine tuning might be required when installed on customer's PCB.



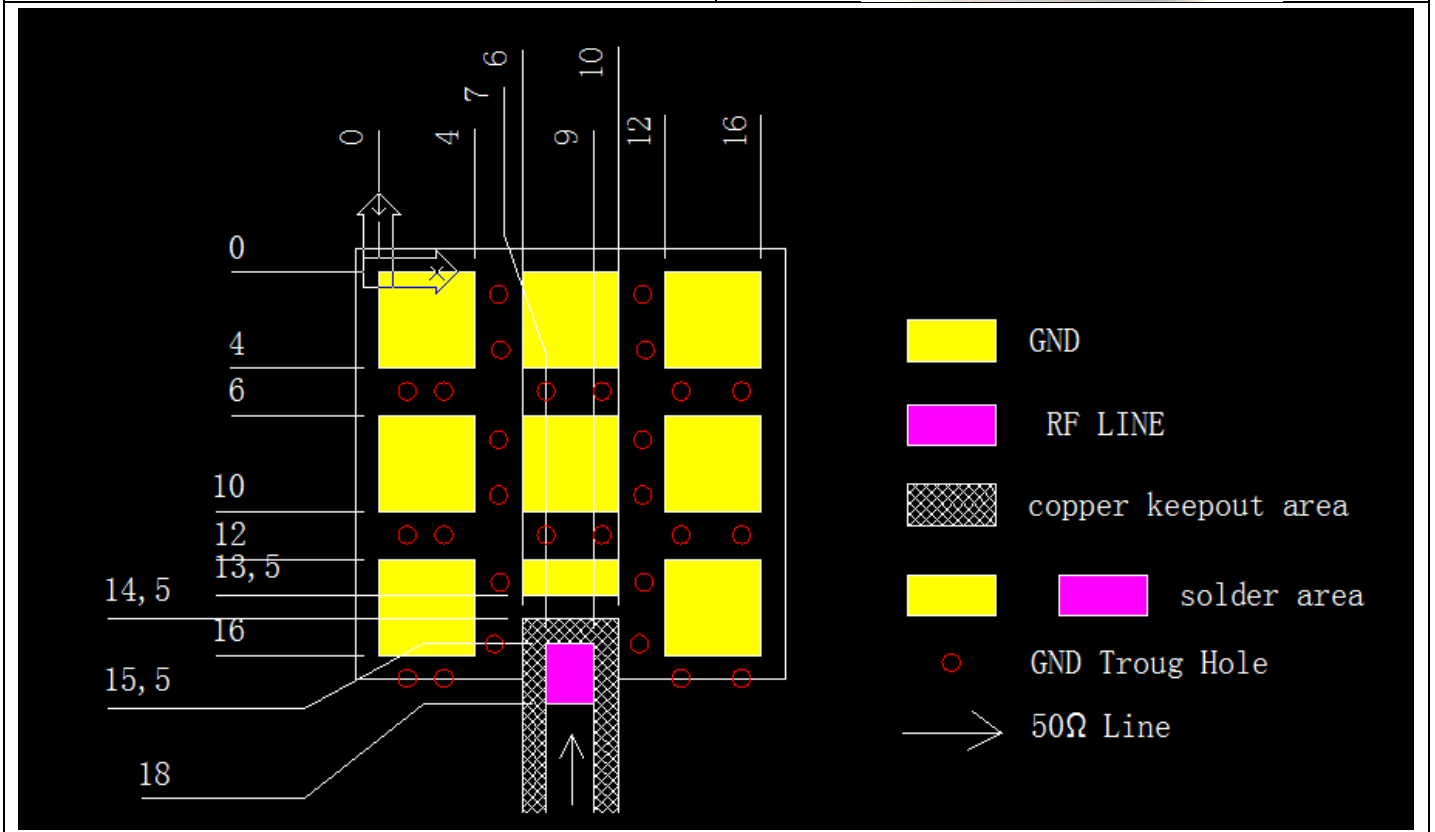
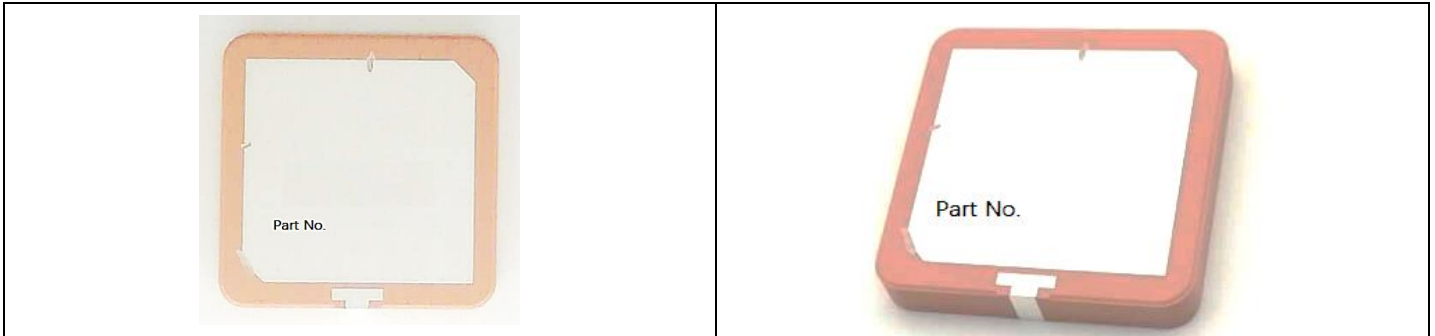
# GNSS Ceramic SMD Mount Antenna



Part Number: G-2RE4

18\*18 \*4 mm  
RoHS/RoHS II Compliant

## Product Dimensions & Pictures





# GNSS Ceramic SMD Mount Antenna

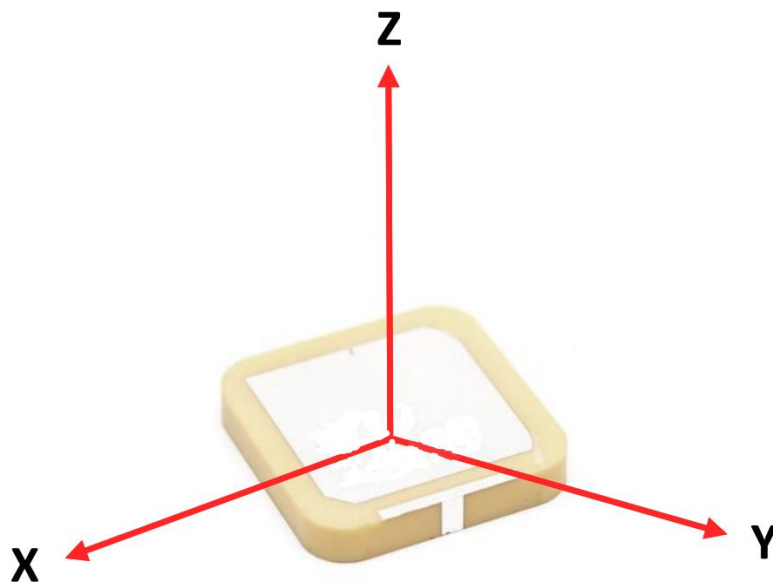
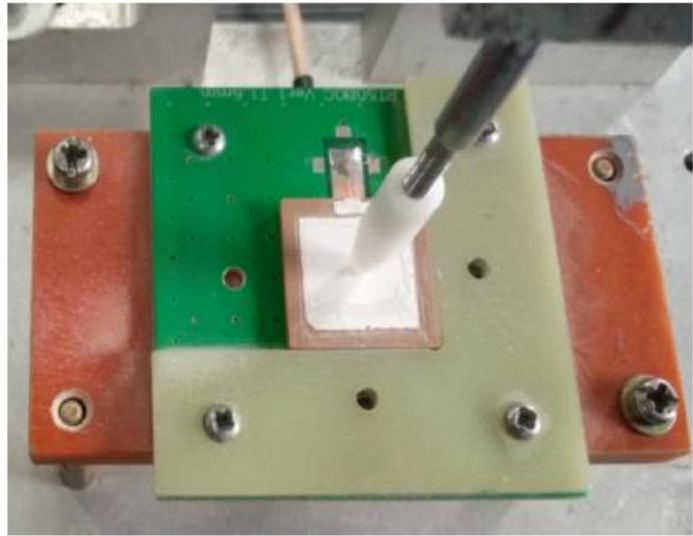
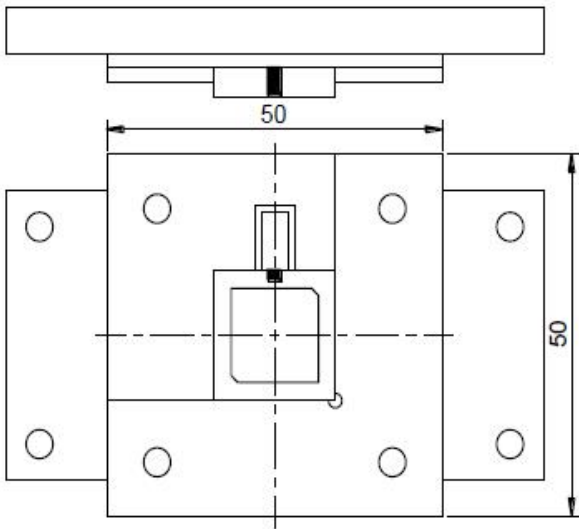


Part Number: G-2RE4

18\*18 \*4 mm  
RoHS/RoHS II Compliant

## Radiation pattern reference

### Test Fixture



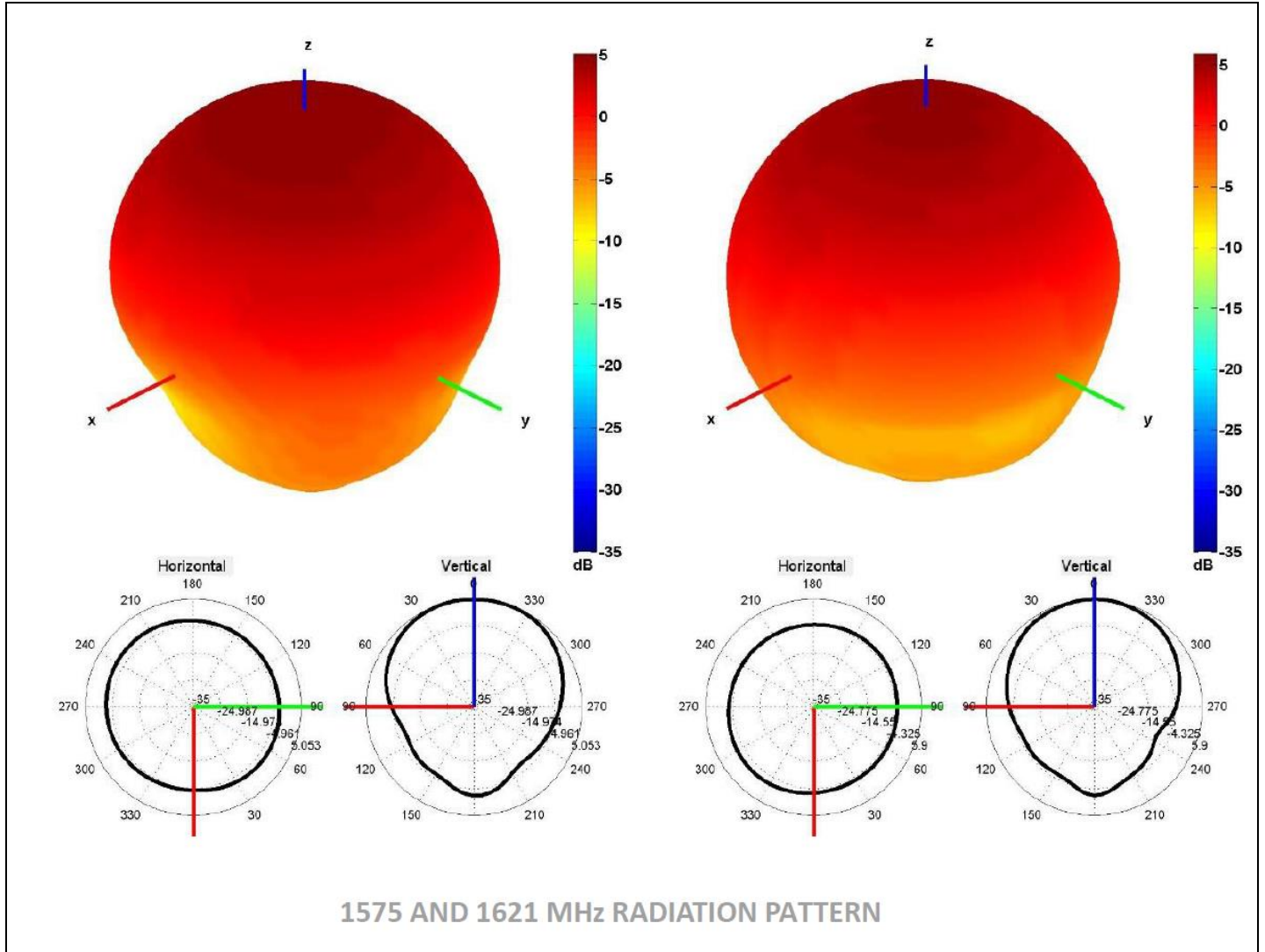


# GNSS Ceramic SMD Mount Antenna



Part Number: G-2RE4

18\*18 \*4 mm  
RoHS/RoHS II Compliant





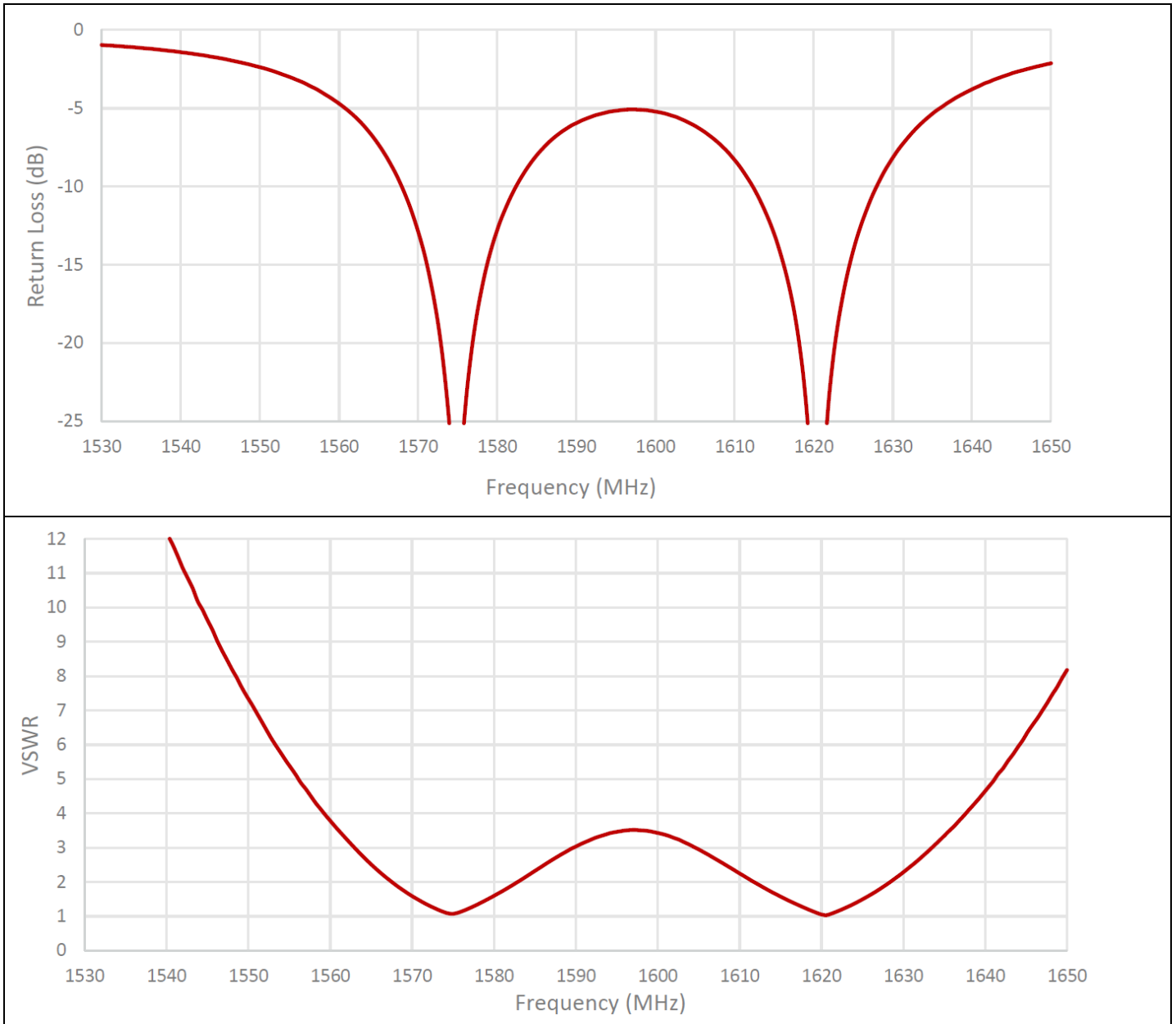
# GNSS Ceramic SMD Mount Antenna



Part Number: G-2RE4

18\*18 \*4 mm  
RoHS/RoHS II Compliant

## Antenna parameters



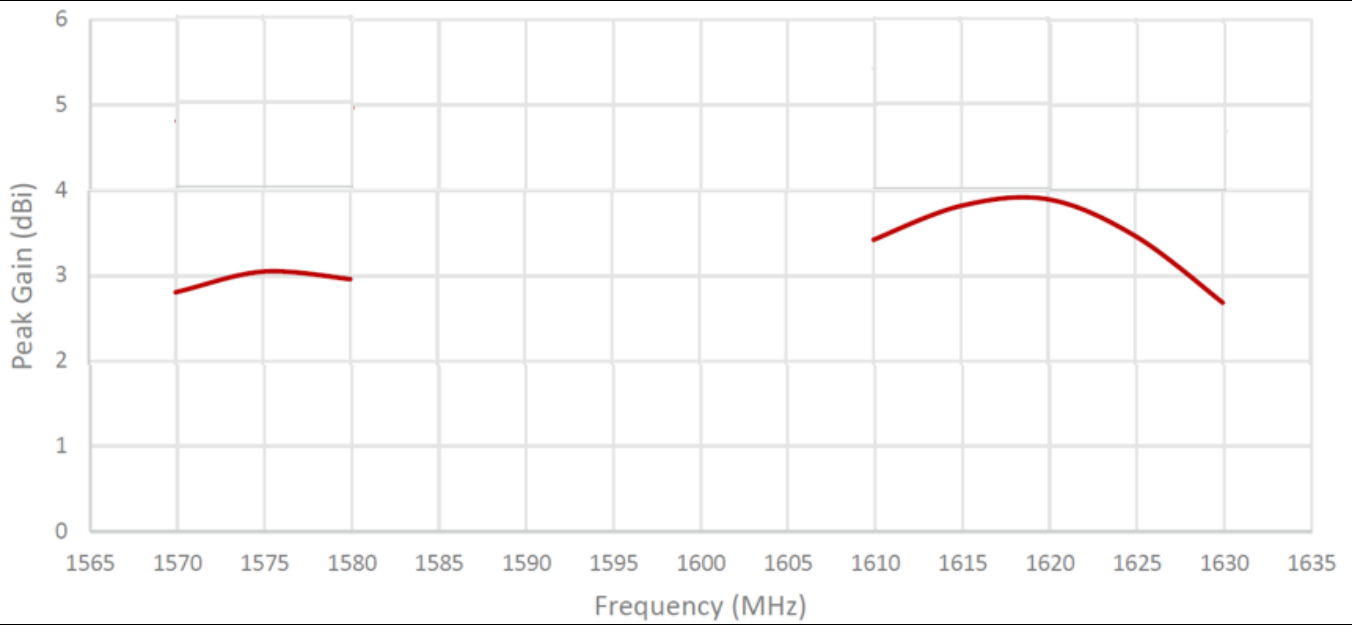
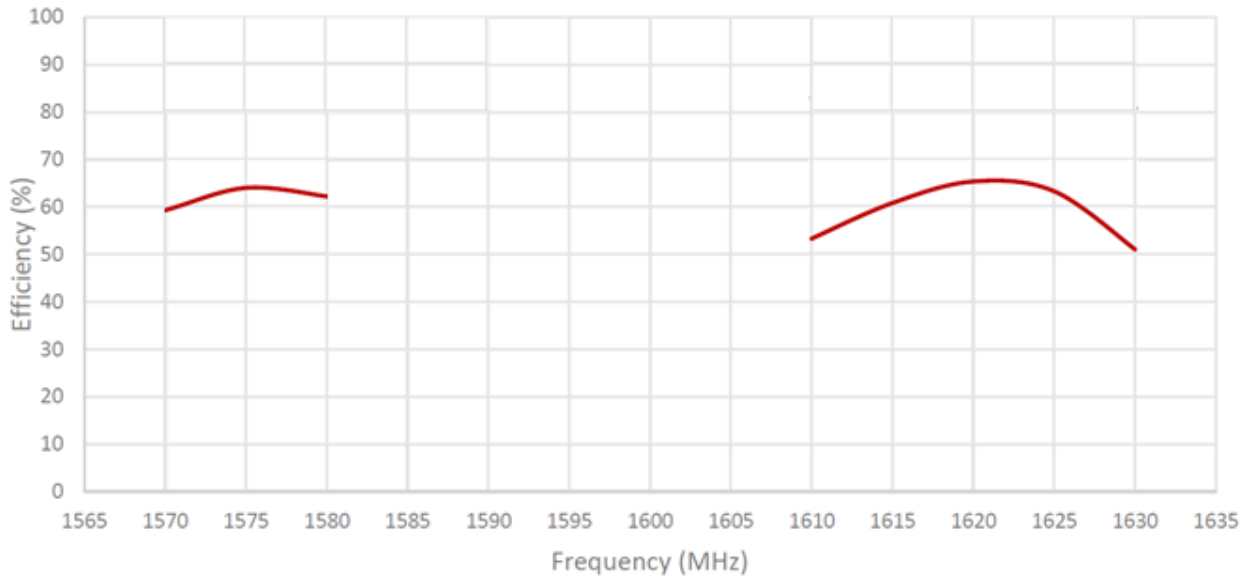


# GNSS Ceramic SMD Mount Antenna



Part Number: G-2RE4

18\*18 \*4 mm  
RoHS/RoHS II Compliant



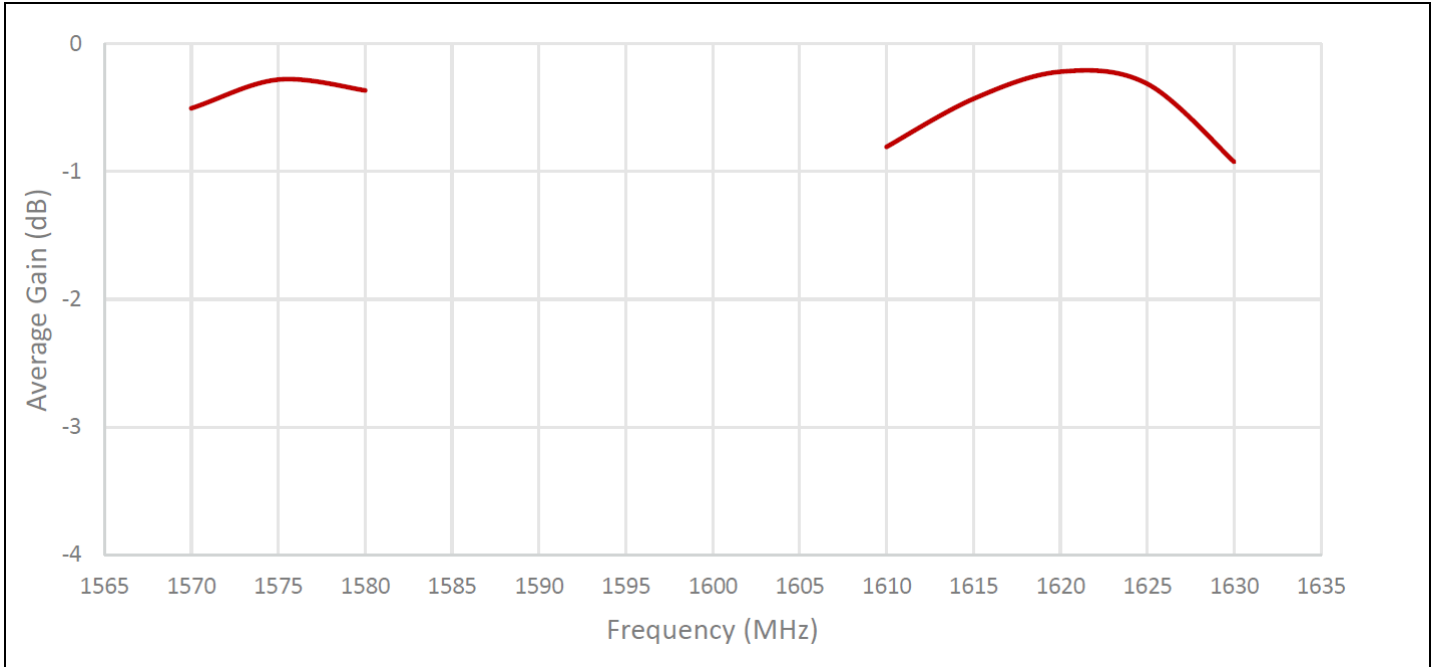


# GNSS Ceramic SMD Mount Antenna



Part Number: G-2RE4

18\*18 \*4 mm  
RoHS/RoHS II Compliant





MiotWireless

Miot Wireless Solutions Ltd

<http://www.mioticsolutions.com>

[Info@mioticsolutions.com](mailto:Info@mioticsolutions.com)

## GNSS Ceramic SMD Mount Antenna



**Part Number:** G-2RE4

**18\*18 \*4 mm**

**RoHS/RoHS II Compliant**

### **Packaging**

---

**TBD**

### **Caution:**

- (1) Do not apply excess mechanical stress to the component body or terminations. Do not attempt to re-form or bend the components as this will cause damage to the component.
- (2) Do not expose the component to open flame.
- (3) This specification applies to the functionality of the component as a single unit. Please ensure the component is thoroughly evaluated in the application circuit.